

# Cloverleaf Plaza *(Tillman's Corner) Mobile, Alabama*

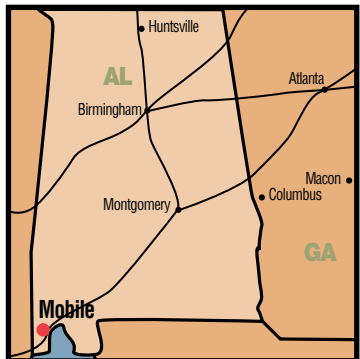
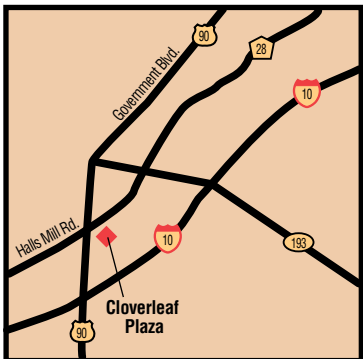
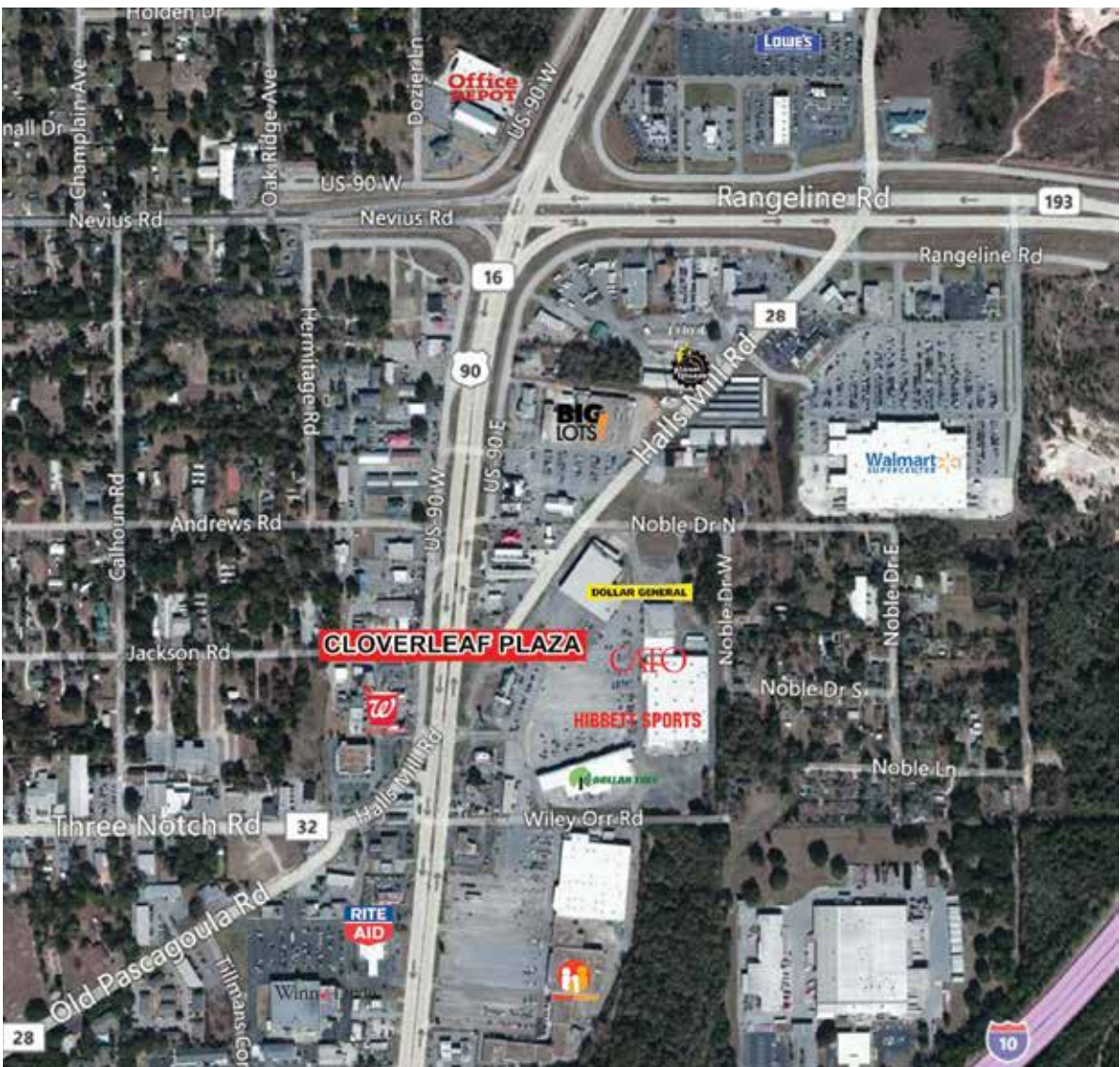
## The Market

Total Trade	
Area Population	<b>273,940</b>
Average Household Income	<b>\$60,486</b>

## Traffic Count

	VPD
US Hwy 90 & Government Blvd	<b>35,208</b>
Hall's Mill Road	<b>18,240</b>
Interstate 10 & US Hwy 90	<b>65,990</b>

For Leasing Information  
Contact Steve Wallace  
334-277-1000 ext. 426  
steve.wallace@aronov.com



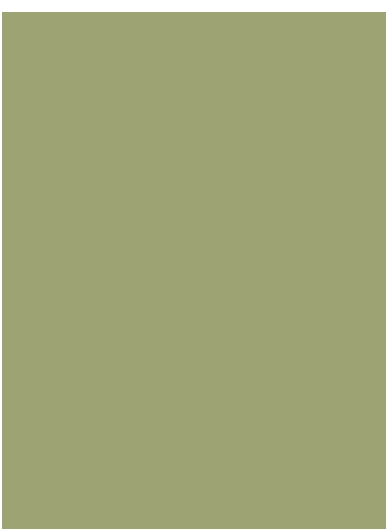
3500 Eastern Boulevard  
Montgomery, AL 36116  
www.aronov.com  
tel 334-277-1000  
fax 334-272-0747

All information for this property is subject to change without notice and no representation or warranty is made to the accuracy thereof.

04/14



# Cloverleaf Plaza *(Tillman's Corner) Mobile, Alabama*



call 334.277.1000 or visit [www.aronov.com](http://www.aronov.com)

# The Center

## Cloverleaf Plaza (Tillman's Corner) Mobile, Alabama

### Project Highlights

- The shopping center is located in the Tillman's Corner area of Mobile, which is an integral part of the Mobile MSA serving a 564,071 person trade area.
- Cloverleaf Plaza boasts high traffic counts on US Hwy 90/Government Blvd which fronts the shopping center.
- Tillman's Corner is the shopping hub of south Mobile.
- Cloverleaf Plaza's strong base of popular retailers consistently generates traffic.
- Within 10 miles of the center there are 12,337 businesses employing more than 152,091 persons.
- Good traffic ingress/egress.

### The Project

Hibbett Sports, Cato,  
Dollar Tree, Specialty Shops

Total Square Feet **242,756**

