

Cloverleaf Plaza (Tillman's Corner) Mobile, Alabama

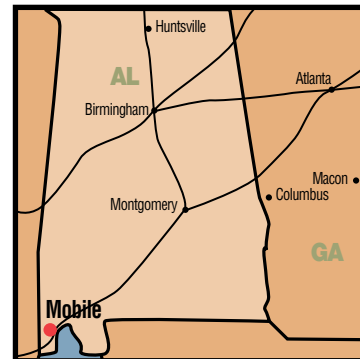
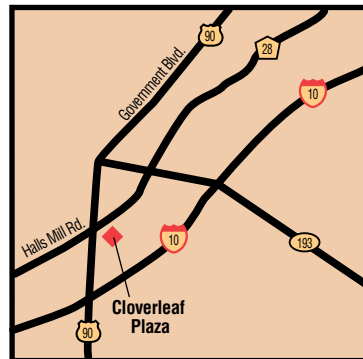
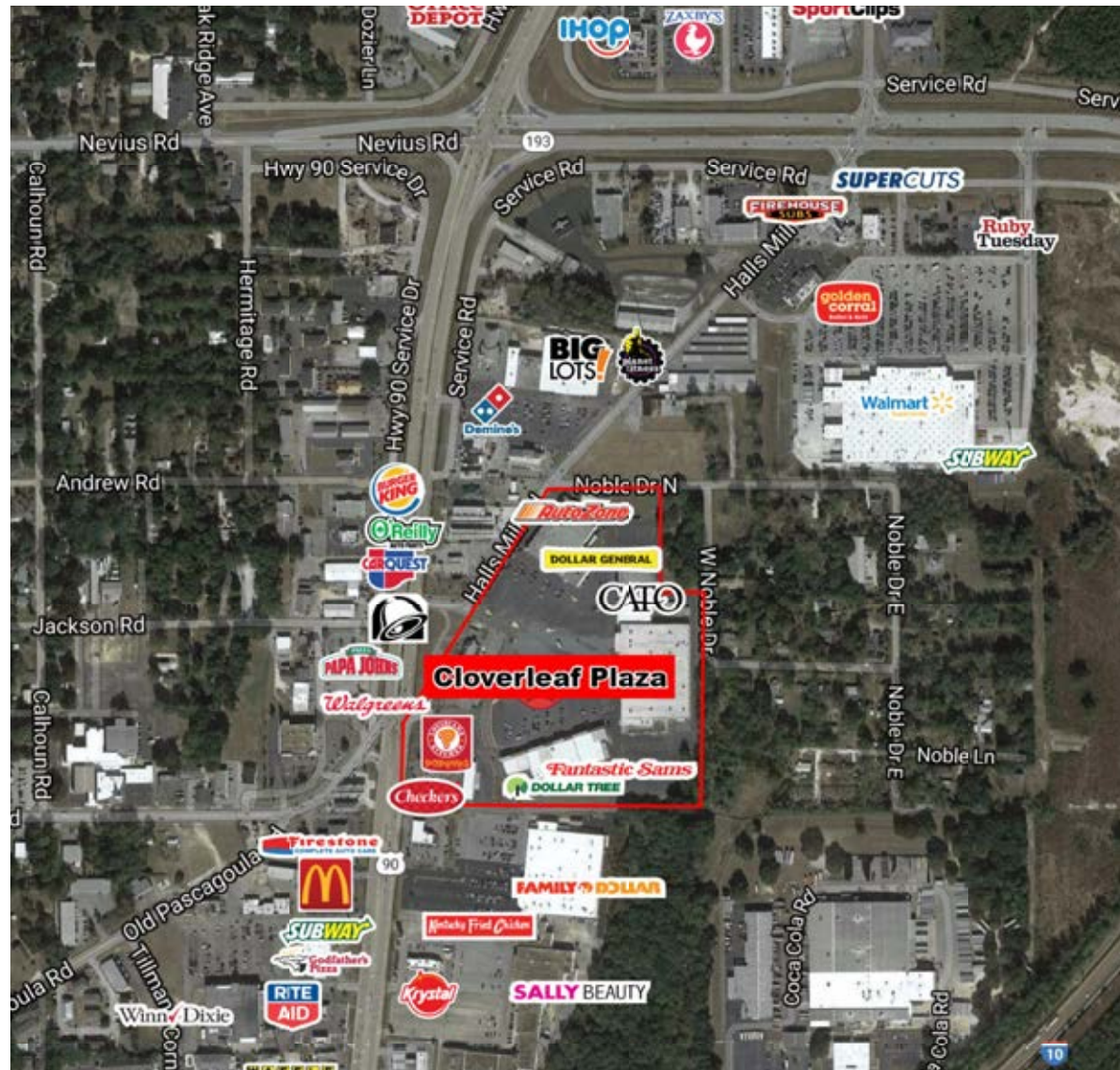
*The Market*

Total Trade  
 Area Population **272,243**  
 Average Household  
 Income **\$65,113**

*Traffic Count*

VPD  
 US Hwy 90 &  
 Government Blvd **35,208**  
 Hall's Mill Road **18,240**  
 Interstate 10 &  
 US Hwy 90 **65,990**

For Leasing Information  
 Contact Allen Schmidt  
 334-277-1000 ext. 425  
 allen.schmidt@aronov.com



3500 Eastern Boulevard  
 Montgomery, AL 36116  
 www.aronov.com  
 tel 334-277-1000  
 fax 334-272-0747

All information for this property is subject to change without notice and no representation or warranty is made to the accuracy thereof.



Cloverleaf Plaza

(Tillman's Corner) Mobile, Alabama



call 334.277.1000 or visit [www.aronov.com](http://www.aronov.com)

# The Center

## Cloverleaf Plaza

(Tillman's Corner) Mobile, Alabama

### Project Highlights

- The shopping center is located in the Tillman's Corner area of Mobile, which is an integral part of the Mobile MSA serving a 564,071 person trade area.
- Cloverleaf Plaza boasts high traffic counts on US Hwy 90/Government Blvd which fronts the shopping center.
- Tillman's Corner is the shopping hub of south Mobile.
- Cloverleaf Plaza's strong base of popular retailers consistently generates traffic.
- Within 10 miles of the center there are 12,747 businesses employing more than 147,632 persons.
- Good traffic ingress/egress.

### The Project

5405 Highway 90  
Mobile, AL 36619

Hibbett Sports, Cato,  
Dollar Tree, Specialty Shops

Total Square Feet **242,756**

