

South Huntsville Square *Huntsville, Alabama*

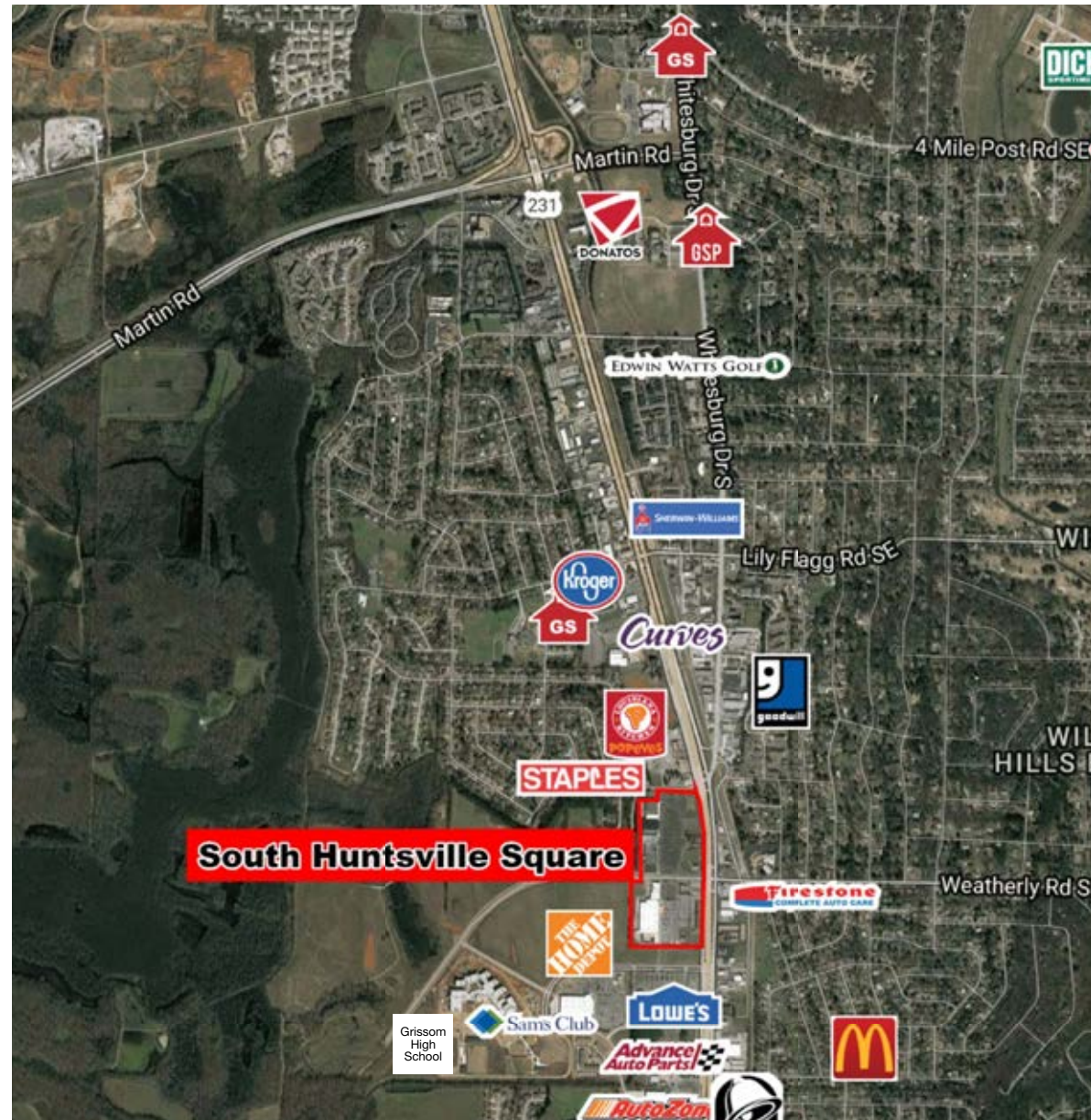
The Market

Total Trade
 Area Population **322,889**
 Average Household
 Income **\$85,165**

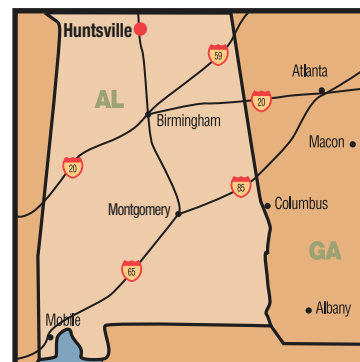
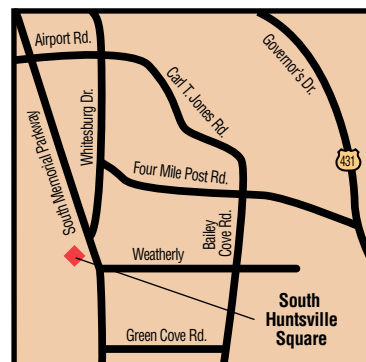
Traffic Count

VPD
 South Memorial Parkway /
 AL Hwy 53 **111,000**

For Leasing Information
 Contact Steve Wallace
 334-277-1000 ext. 426
 steve.wallace@aronov.com



South Huntsville Square



3500 Eastern Boulevard
 Montgomery, AL 36116
 www.aronov.com
 tel 334-277-1000
 fax 334-272-0747

All information for this property is subject to change without notice and no representation or warranty is made to the accuracy thereof.

04/17



South Huntsville Square

Huntsville, Alabama



call 334.277.1000 or visit www.aronov.com

The Center

South Huntsville Square

Huntsville, Alabama

Project Highlights

- Grissom High School, the city's largest high school by enrollment with approximately 2,000 students, will relocate behind the shopping center and will open in Fall 2017.
- Land bordering the new high school site behind the shopping center is slated for a new residential development that could accommodate up to 700 new homes.
- Madison County has the second highest per capita income in the state of Alabama.
- Huntsville is among the top 10 Most Promising U.S. Tech Hubs to watch in 2014, Techie.com, January 2014
- Madison County ranked No. 7 in the country of a great place to live and find a job, Money.com, August 2013.
- The Huntsville metro area has experienced tremendous growth in the past ten years, expanding from 342,376 persons in 2000 to 425,480 in 2011; over a 24% increase in population.
- The Huntsville/Madison County economy is one of the strongest in the Southeast, with low unemployment, steady job growth, and income levels that regularly lead the region. Business growth and investment from U.S. and international companies have made Huntsville/Madison County one of the country's "hot spots" for business growth and quality of life.

The Project

10012 Memorial Parkway S.
Huntsville, AL 35803

Home Depot, Staples,
Specialty Shops

Total Square Feet **359,372**

